



**PAUL ASKINS**

Mob +614 07712768

[paskins@westnet.com.au](mailto:paskins@westnet.com.au)

## **BANGEMALL Zn-Cu-Co PROJECT**

For sale on flexible terms.

Highly prospective area with untested EM anomaly, known stream sediment anomalies, yet only two previous drill holes.

Prospective for sediment hosted Cu, Sedex (Zn-Pb-Ag), Mt. Isa (Cu-silica-dolomite), and Abra (Pb-Ag-Cu-Au-Ba) styles of mineralisation.

### **Tenement:**

Exploration Licence E52/4222, 65 blocks, 203 sq km, granted 17 February 2023.

On Pastoral land and vacant crown land.

18km from the Abra deposit.

### **Geology and mineralisation:**

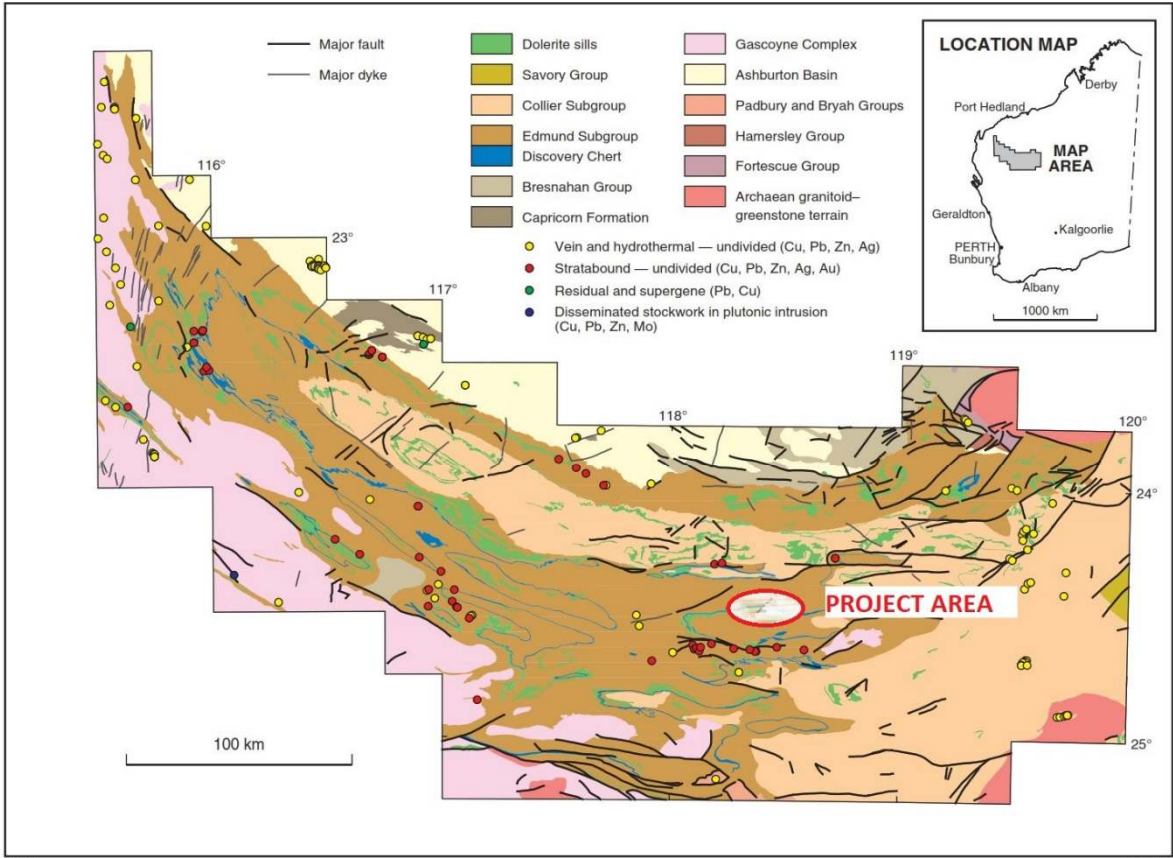
- Proterozoic Bangemall Supergroup,
- Discovery Chert horizon, marking a basin-wide hydrothermal event,
- Faulted area, which indicates presence in basement of a major fault parallel to Tangadee lineament, ideal plumbing system to deliver mineralising fluids.
- EM anomaly in 100-150m depth slice within fault zone,
- Widespread Zn, Cu, Co anomalism in stream sediments in the faulted zone stratigraphically below the Discovery Chert.
- Some mapped mineralised veinlets.

**Exploration to date:** Important players were RTZ (to 2000) and later BHP (only for CID iron ore). EM regional survey in 2013 by GSWA.

RTZ generated stream sediment anomalies and drilled two RC holes. Holes, in carbonaceous and dolomitic shales, were **east of** the EM anomaly yet intersected up to 10m @0.2% Zn.

### **FURTHER INFORMATION**

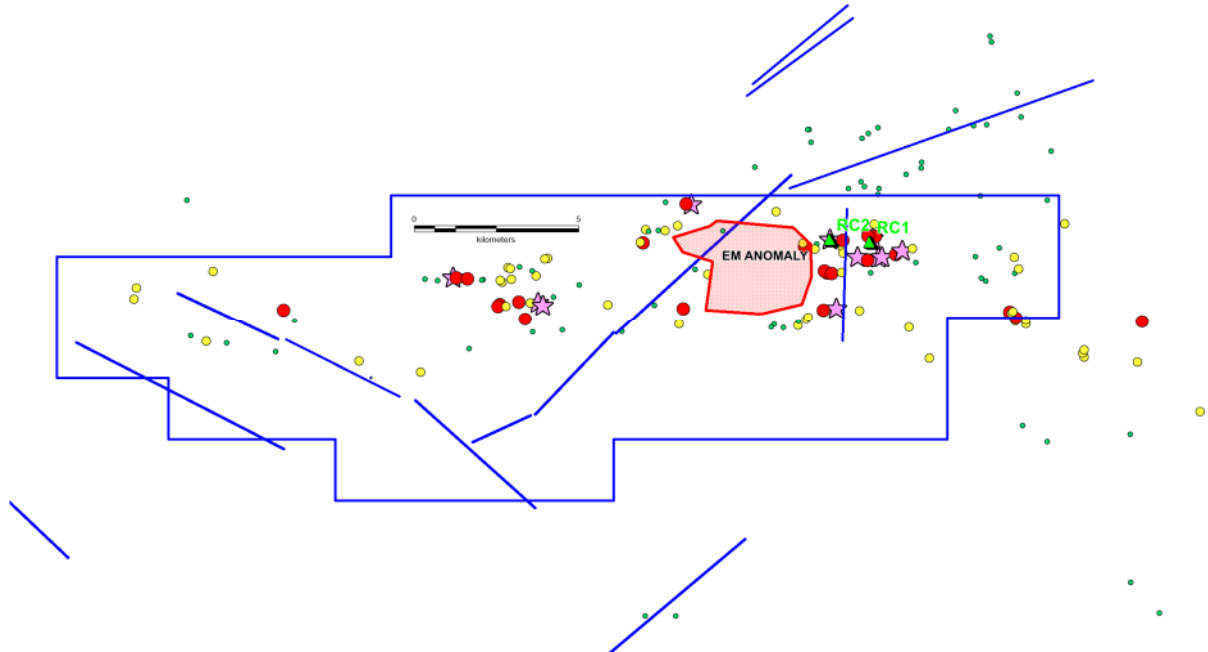
Contact Paul Askins for further details on the project.



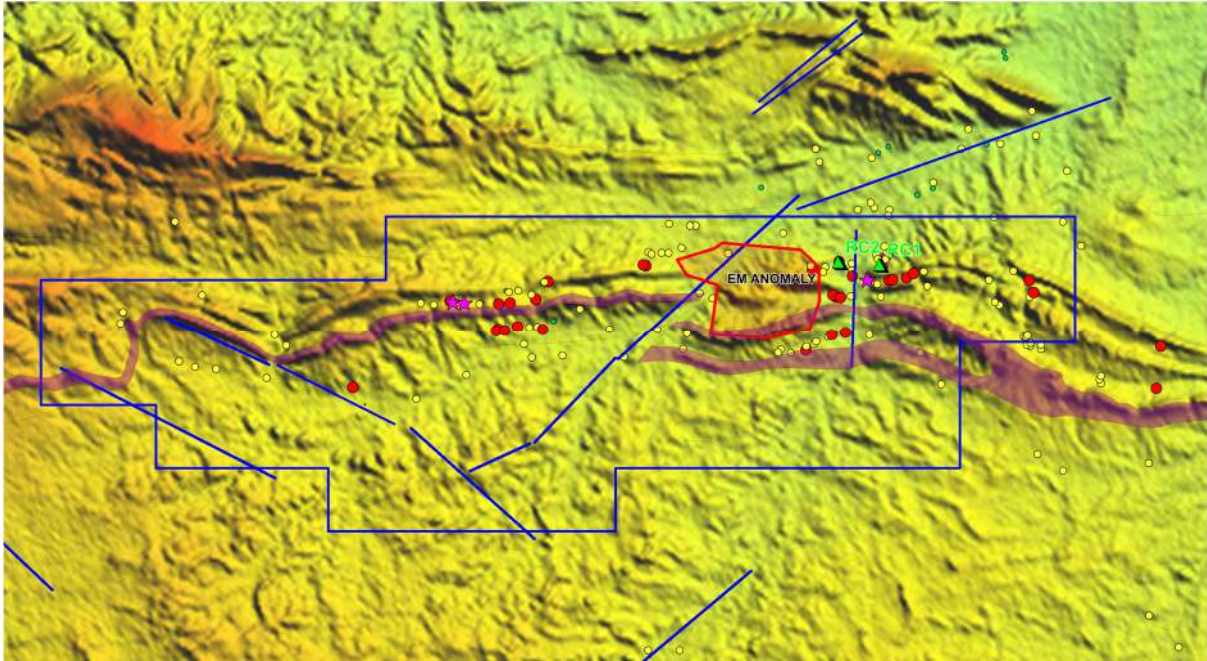
RWC11

21.07.98

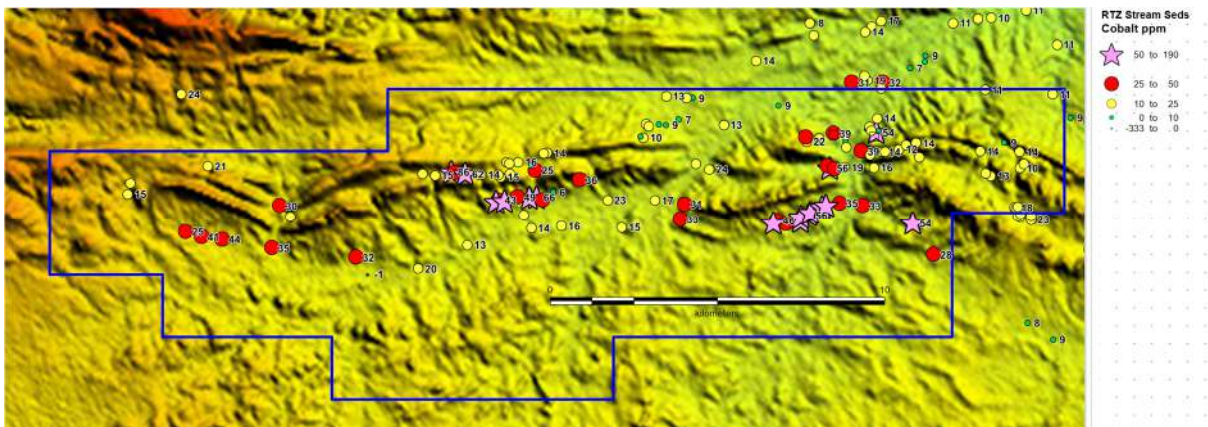
Distribution of base metals in the Bangemall Basin — copper, lead, and zinc by mineralization style



Stream sediment zinc anomalies (stars are 400-1250ppm), location of two RC holes, EM anomaly at 100-150m depth slice, some faults.



Stream sediment Cu anomalies (stars 150-250ppm), Discovery chert (magenta) dipping south, on DEM image.



Cobalt anomalism widespread!

Paul Askins is a geologist who has held senior management positions with major exploration and mining companies, and has over 40 years' experience in mineral exploration for a broad range of commodities in Australia and overseas. He has strengths in all phases of exploration from administration, strategy, aggressive and innovative prospect selection, target generation, field and office assessments, through to feasibility studies. He enjoys innovative prospect and target generation, using lateral thinking at all scales from regional to detailed prospect scale. He is an ore finder, and is proud to have been Western Australian Exploration Manager for Billiton (Shell Metals) when his team discovered the multi-mineral ounce Sunrise Dam gold deposit.

While every care has been taken in the preparation of this document, no warranty is given as to the correctness of the information and no liability is accepted for any statement or opinion or for any error or omission. The information is presented in good faith and is derived from sources believed to be reliable and accurate, and is provided on the basis that readers will be responsible for making their own assessment of the information and that they should verify all relevant representations, statements and information. Consequently Paul Askins will not be responsible or liable for any loss or damage caused arising from the use or reliance on the information, data or advice.