



PAUL ASKINS

Mob +614 07712768

paskins@westnet.com.au

ESPERANCE REE PROJECT

Available for sale on flexible terms.

Target: True Ionic Adsorption Clay deposits. Potential for cheapest effective and environmentally friendly extraction.

Significant REE deposits have already been found in clays by several companies in this district ("Esperance Type"), but they are not true ionic clays and are being found to have poor recoveries needing expensive metallurgical processes.

This project is in a different geological setting to the typical Esperance Type deposits; the targets have been developed by me using a number of geological, geochemical and other parameters, apparently not yet applied by any others in the industry.

The full prospectivity plus the environmentally friendly potential extraction process can be explained to genuine buyers.

An excellent opportunity for cheap entry at this early phase of exploration.

Location: 30km NE of the major town and port of Esperance.

Tenements:

Exploration Licence E63/2200, ("Wittenoom Hill"), held by P Askins, granted 14 April 2022, 59 blocks; 169 sq km. Annual expenditure commitment \$59 0000 pa.

Exploration Licence E63/2373, ("Lanes Rd"), held by P Askins, granted 6 November 2023, 94 blocks, 269 sq km. Annual expenditure commitment \$95 0000 pa.

On Private Properties. Minor encroachments onto Reserves, likely to be inaccessible for mining.

Advantages of this project:

Known REE district. Clearly there are fertile sources of REE in the Proterozoic bedrock.

Along strike there are high REE intercepts at Mia/ Marvin prospect, [eg. 6m at 6,648ppm TREO (41% MagREO) from 57m in hole MRAC1188; includes 1m at 2.9% TREO] held by my nearest neighbour, Mt Ridley Mines.

Very close to infrastructure, port, water, power, workforce, beaches, fishing, etc.

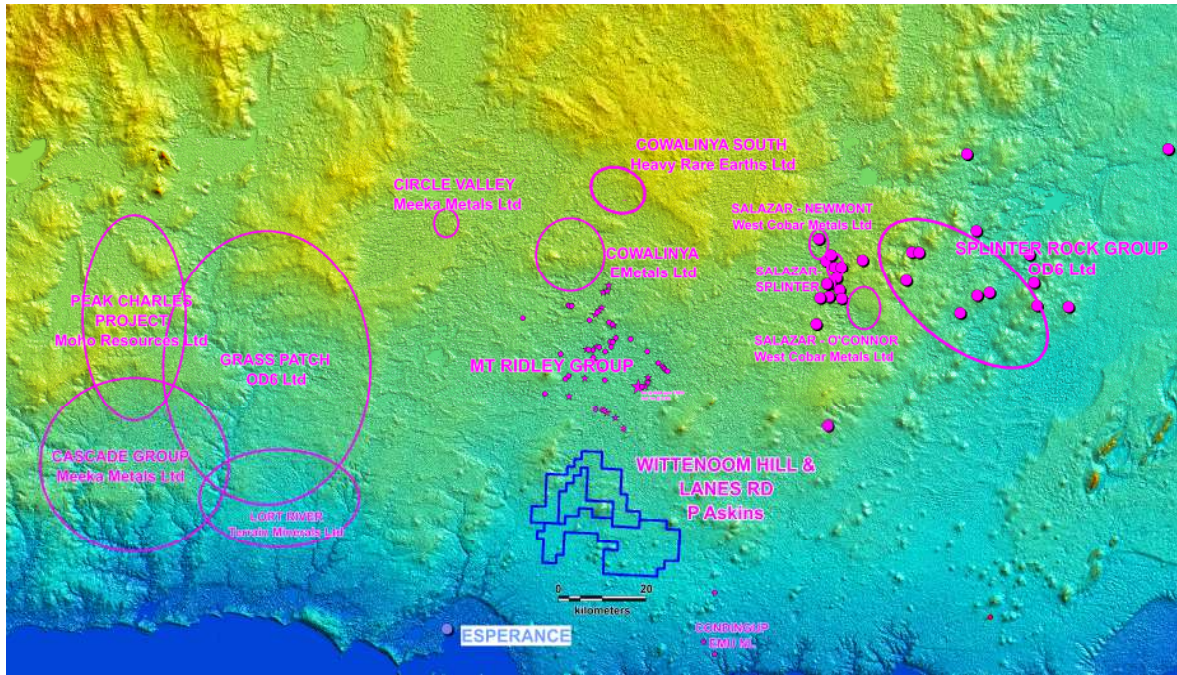
Large tenements with potentially very large mineralised systems, closer to surface than the known Esperance Type deposits; thus likely cheap CAPEX and OPEX.

Cheap to explore (near surface, quick cheap initial test drilling along existing roads for easy access).

Leverage off work done on REEs by other explorers in the district.

Get the best project in the district!

Quality innovative exploration targets



The tenements on DEM image, showing location of known REE in the district.

Paul Askins is a geologist who has held senior management positions with major exploration and mining companies, and has over 40 years' experience in mineral exploration for a broad range of commodities in Australia and overseas. He has strengths in all phases of exploration from administration, strategy, aggressive and innovative prospect selection, target generation, field and office assessments, through to feasibility studies. He enjoys innovative prospect and target generation, using lateral thinking at all scales from regional to detailed prospect scale. He is an ore finder, and is proud to have been Western Australian Exploration Manager for Billiton (Shell Metals) when his team discovered the multi-mineral ounce Sunrise Dam gold deposit.

While every care has been taken in the preparation of this document, no warranty is given as to the correctness of the information and no liability is accepted for any statement or opinion or for any error or omission. The information is presented in good faith and is derived from sources believed to be reliable and accurate, and is provided on the basis that readers will be responsible for making their own assessment of the information and that they should verify all relevant representations, statements and information. Consequently Paul Askins will not be responsible or liable for any loss or damage caused arising from the use or reliance on the information, data or advice.