



PAUL ASKINS
Mob +614 07712768
paskins@westnet.com.au

COONDETHA WELL REE PROJECT

Available for sale on flexible terms.

Target: Ionic Adsorption clay deposits in saprolite, clay, and laterite. REE derived from weathering of apatite-bearing granophyre in/above flat lying Proterozoic dolerite dykes.

No other reported REE projects in this geological setting in Western Australia.

No on ground sampling yet undertaken. Flat lying dykes are mapped by GSWA at 100K scale, and are readily visible on airphotographs and Google Earth imagery. Prospectivity is emphasized by REE anomalism in historical stream sediment sampling (La, Yb) and in regional laterite sampling. No previous exploration reported in the tenement.

An excellent opportunity for cheap entry at this early phase of exploration.

Location: 27km NE of the town of Yalgoo.

Tenement:

Exploration Licence Application E59/2713, held by P Askins, applied for 3 May 2022, 8 blocks; 24 sq km. Total expenditure commitment upon grant \$20 0000 pa.
On Pastoral Lease.

Advantages of this project:

Large potentially mineralised area.

Near surface, weathered clayey rocks.

Established metallurgical process routes:

REE extraction of ionic clays well established world-wide.

Cheap to explore (near surface, quick cheap drilling, flat scrubby terrain for easy access)

Cheap to acquire at this early stage.

Likely cheap CAPEX and OPEX for this style of mineralisation.

Geology:

Archean Yilgarn Craton granitoids invaded by Proterozoic dolerite dykes which are here flat lying, with upper altered granophyric phases*, probably carrying apatite which unlike monazite is easily weathered.

*To be confirmed but probable because of REE anomalism. See the blue altered zones in the Google Earth image below.

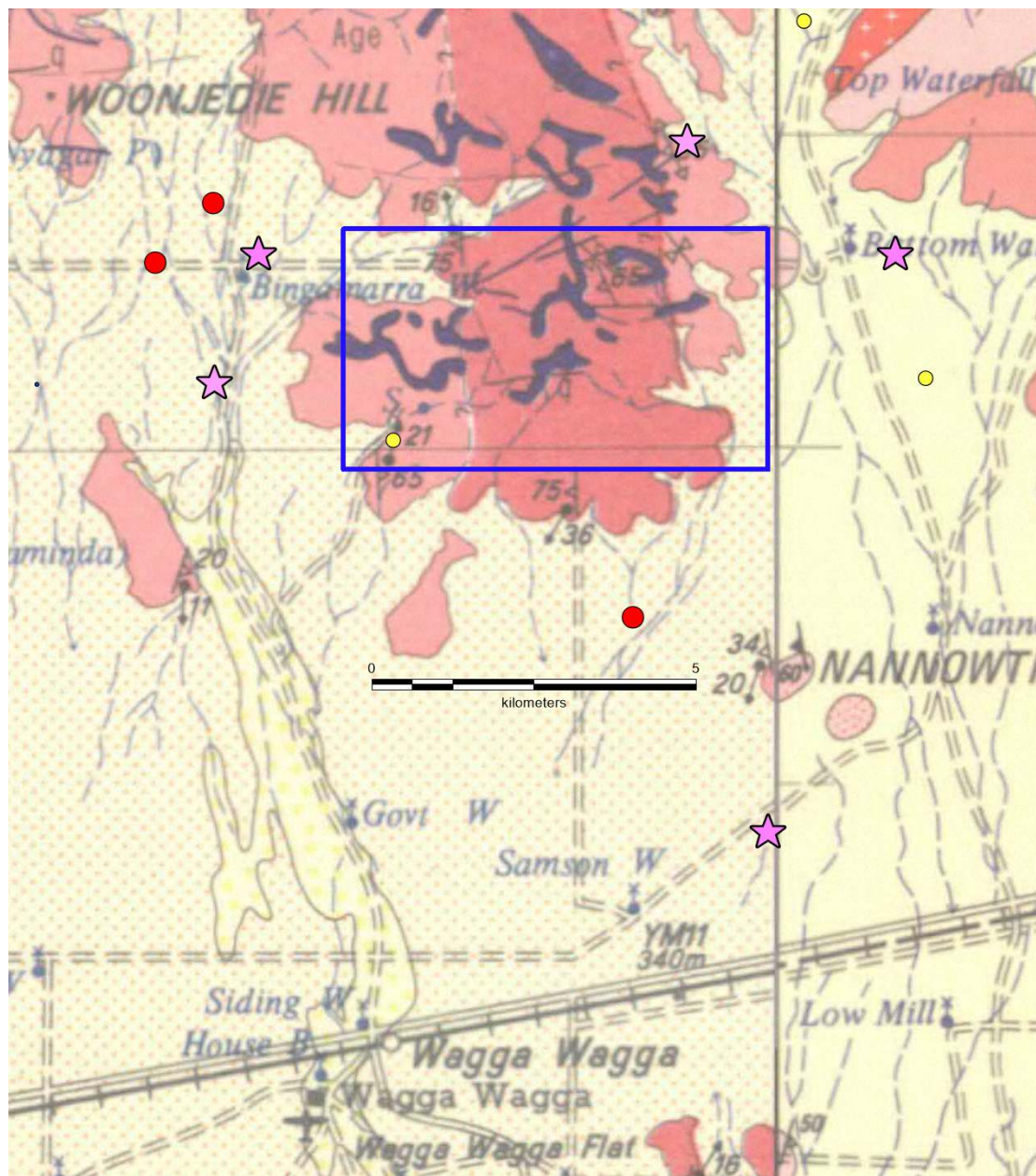
Prospectivity:

- I can supply further information on prospectivity.

Quality innovative exploration targets

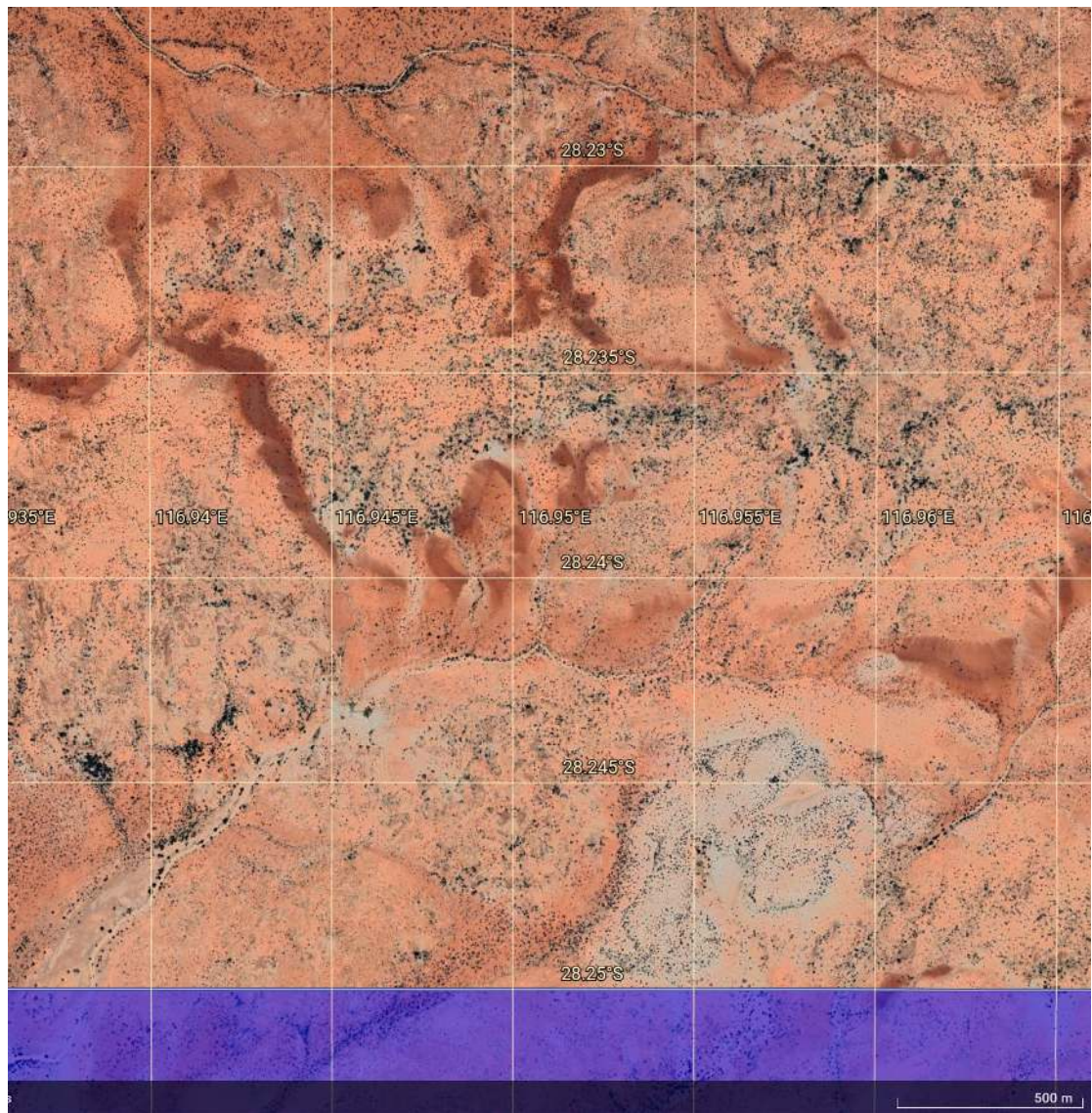
Paul Askins is a geologist who has held senior management positions with major exploration and mining companies, and has over 40 years' experience in mineral exploration for a broad range of commodities in Australia and overseas. He has strengths in all phases of exploration from administration, strategy, aggressive and innovative prospect selection, target generation, field and office assessments, through to feasibility studies. He enjoys innovative prospect and target generation, using lateral thinking at all scales from regional to detailed prospect scale. He is an ore finder, and is proud to have been Western Australian Exploration Manager for Billiton (Shell Metals) when his team discovered the multi-mineral ounce Sunrise Dam gold deposit.

While every care has been taken in the preparation of this document, no warranty is given as to the correctness of the information and no liability is accepted for any statement or opinion or for any error or omission. The information is presented in good faith and is derived from sources believed to be reliable and accurate, and is provided on the basis that readers will be responsible for making their own assessment of the information and that they should verify all relevant representations, statements and information. Consequently Paul Askins will not be responsible or liable for any loss or damage caused arising from the use or reliance on the information, data or advice.



Ytterbium anomalism in laterites and stream sediments, (stars, circles), on 250K GSWA Geology. The source of REE anomalism is flat lying dykes with the chaotic outcrop pattern.

Quality innovative exploration targets



Google Earth imagery of part of tenement. Shows weathered dykes in deep red-brown with flat lying altered bluish rocks above. These altered rocks are prime ionic clay REE targets.

Quality innovative exploration targets